



**India Meteorological Department  
(Ministry of Earth Sciences)**

**NATIONAL BULLETIN NO. 28 (BOB/07/2024)**

**TIME OF ISSUE: 0915 HOURS IST**

**DATED: 30.11.2024**

**FROM: INDIA METEOROLOGICAL DEPARTMENT (FAX NO. 24643965/24699216/24623220)**

**TO: CONTROL ROOM, NDM, MINISTRY OF HOME AFFAIRS (FAX.NO. 23093750)**

**CONTROL ROOM NDMA (FAX.NO. 26701729)**

**CABINET SECRETARIAT (FAX.NO.23012284, 23018638)**

**PS TO HON'BLE MINISTER FOR S & T AND EARTH SCIENCES (FAX NO.23316745)**

**SECRETARY, MOES (FAX NO. 24629777)**

**H.Q. (INTEGRATED DEFENCE STAFF AND CDS) (FAX NO. 23005137/23005147)**

**DIRECTOR GENERAL, DOORDARSHAN (23385843)**

**DIRECTOR GENERAL, AIR (23421105, 23421219)**

**PIB MOES (FAX NO. 23389042)**

**UNI (FAX NO. 23355841)**

**D.G. NATIONAL DISASTER RESPONSE FORCE (NDRF) (FAX NO. 26105912, 2436 3260)**

**DIRECTOR, PUNCTUALITY, INDIAN RAILWAYS (FAX NO. 23388503)**

**CHIEF SECRETARY, ANDAMAN & NICOBAR ISLANDS (FAX NO. 03192-232656)**

**CHIEF SECRETARY, TAMIL NADU (FAX NO. 044-25672304)**

**CHIEF SECRETARY, ANDHRA PRADESH (FAX NO. 0863-2441029)**

**CHIEF SECRETARY, PUDUCHERRY (FAX NO. 0413-2334145)**

**CHIEF SECRETARY, ODISHA (FAX NO. 0674-2536660)**

**Sub: Cyclonic Storm "FENGAL" [pronounced as FEINJAL] over Southwest Bay of Bengal (Cyclone Warning: Red Message for North Tamil Nadu, Puducherry and adjoining south Andhra Pradesh Coasts)**

The Cyclonic Storm "FENGAL" [pronounced as FEINJAL] over Southwest Bay of Bengal moved west-northwestwards with a speed of 12 kmph during past 6 hours and lay centred at 0530 hours IST of today, the 30<sup>th</sup> November 2024 over the same region near latitude 12.2°N and longitude 81.2°E, about 150 km east of Puducherry, 140 km southeast of Chennai, 210 km northeast of Nagappattinam and 400 km north of Trincomalee.

It is likely to move nearly westwards and cross north Tamil Nadu-Puducherry coasts between Karaikal and Mahabalipuram close to Puducherry as a cyclonic storm with a wind speed of 70-80 kmph gusting to 90 kmph during evening of 30<sup>th</sup> November.

The system is being continuously monitored.

Forecast track and intensity are given in the following table:

<b>Date/ Time (IST)</b>	<b>Position (Lat. °N/ long. °E)</b>	<b>Maximum sustained surface wind speed (Kmph)</b>	<b>Category of cyclonic disturbance</b>
30.11.24/0530	12.2/81.2	75-85 gusting to 95	Cyclonic Storm
30.11.24/1130	12.3/80.5	75-85 gusting to 95	Cyclonic Storm
30.11.24/1730	12.2/79.9	70-80 gusting to 90	Cyclonic Storm
30.11.24/2330	12.0/79.2	55-65 gusting to 75	Deep Depression

## **Warnings:**

### **(i) Rainfall Warning:**

**Tamil Nadu & Puducherry:** Light to moderate rainfall at many places with **heavy to very heavy rainfall** at a few places and **extremely heavy rainfall** at isolated places over north Tamil Nadu – Puducherry on 30<sup>th</sup> November; **heavy to very heavy rainfall** at isolated places over interior Tamil Nadu on 01<sup>st</sup> December, and **heavy rainfall** at isolated places over Tamil Nadu on 02<sup>nd</sup> and 03<sup>rd</sup> December.

**Coastal Andhra Pradesh:** Light to moderate rainfall at many places with **heavy to very heavy rainfall** with **extremely heavy rainfall** at isolated places over south coastal Andhra Pradesh on 30<sup>th</sup> November, and **heavy rainfall** at isolated places on 01<sup>st</sup> December.

**Rayalaseema:** Light to moderate rainfall at many places with **heavy to very heavy rainfall** with **extremely heavy rainfall** at isolated places is likely on 30<sup>th</sup> November; **heavy rainfall** at isolated places on 01<sup>st</sup> December.

**South interior Karnataka:** Light to moderate rainfall at many places with isolated **heavy rainfall** is likely on 30<sup>th</sup> November, **heavy to very heavy rainfall** at isolated places on 01<sup>st</sup> & 2<sup>nd</sup> December.

**Kerala:** Light to moderate rainfall at many places with isolated heavy rainfall is likely on 30<sup>th</sup> November, **heavy to very heavy rainfall** at isolated places on 01<sup>st</sup> & 2<sup>nd</sup> December.

### **(ii) Wind warning:**

- **Southwest Bay of Bengal:** Gale wind speed reaching 75-85 gusting to 95 is prevailing over southwest Bay of Bengal. It is likely to decrease gradually becoming 55-65 kmph gusting to 75 kmph by night of 30<sup>th</sup> November.
- **Adjoining areas of westcentral Bay of Bengal:** Squally wind speed reaching 55-65 kmph gusting to 75 kmph is likely to prevail over adjoining areas of westcentral Bay of Bengal till night of 30<sup>th</sup> November. It is likely to decrease thereafter.
- **Along & off North Tamil Nadu – Puducherry and adjoining South Andhra Pradesh coasts:** Gale wind speed reaching 75-85 gusting to 95 is prevailing along & off **North Tamil Nadu - Puducherry and adjoining South Andhra Pradesh coasts**. It is likely to prevail till evening of 30<sup>th</sup> November and gradually decrease thereafter.
- **Costal districts of north Tamil Nadu & south Andhra Pradesh:** Gale wind speed reaching 60-70 kmph gusting to 80 kmph is prevailing over costal districts of Tamil Nadu (Tiruvallur, Chennai, Chengalpattu, Villupuram and Puducherry) and Andhra Pradesh (Tirupati and Nellore). It is likely to increase becoming 75-85 gusting to 95 kmph over costal districts of Tamil Nadu (**Tiruvallur, Chennai, Chengalpattu, Villupuram, Puducherry Cuddalore, Mayiladuthurai and Nagappattinam**) and Andhra Pradesh (**Tirupati, Nellore and Prakasham**) from 30<sup>th</sup> November morning to evening of 30<sup>th</sup> November. It is likely to decrease thereafter.
- **Along & off South Tamil Nadu coast and Gulf of Mannar:** Squally wind speed reaching 45-55 kmph gusting to 65 kmph is likely to prevail till 30<sup>th</sup> evening and gradually decrease thereafter.

### **(iii) Sea condition:**

Very Rough to High Sea conditions is very likely over southwest Bay of Bengal adjoining areas of westcentral Bay of Bengal, Gulf of Mannar and along & off Tamil Nadu-Puducherry, South Andhra Pradesh and East Sri Lanka coasts till evening of 30<sup>th</sup> November. It will gradually improve becoming Very rough to rough till night of 30<sup>th</sup> November.

**(iv) Flash Flood Guidance:**

**24 hours Outlook for the Flash Flood Risk (FFR) till 0530 IST of 30-11-2024 :**

Low to Moderate flash flood risk likely over few watersheds & neighbourhoods of following Met Sub-divisions during next 24 hours.

**Coastal Andhra Pradesh & Yanam** - Nellore district.

**Rayalaseema** - Chittoor and Kadapa districts.

**Tamil Nadu - Puducherry & Karaikal** - Puduchery, Chennai, Cuddalore, Kanchipuram, Tiruvallur, Tiruvannamalai, Vellore and Villupuram districts.

Surface runoff/ Inundation may occur at some fully saturated soils & low-lying areas over Area of Concern (AoC) as shown in map due to expected rainfall occurrence in next 24 hours.

**(v) Storm surge Warning:**

Storm surge of about 1 meter height above the astronomical tide is likely to inundate the low lying areas of the coastal districts of north Tamil Nadu, Puducherry and adjoining south Andhra Pradesh during the time of landfall.

**(vi) Fisherman warning:**

- Total suspension of fishing operations.
- Fishermen are advised not venture into southwest Bay of Bengal adjoining areas of westcentral Bay of Bengal, Gulf of Mannar and along & off Tamil Nadu-Puducherry, South Andhra Pradesh and East Sri Lanka coasts till 30<sup>th</sup> November.
- Fishermen out at sea are advised to return to coast.

**(vii) Impact Expected [over coastal districts of North Tamil Nadu (Tiruvallur, Chennai, Chengalpattu, Villupuram, Puducherry Cuddalore, Mayiladuthurai and Nagappattinam) and Andhra Pradesh (Tirupati, Nellore and Prakasham)]**

- Localized Flooding of roads, water logging in low lying areas and closure of underpasses mainly in urban areas of the above region.
- Occasional reduction in visibility due to heavy rainfall.
- Disruption of traffic in major cities due to water logging in roads leading to increased travel time.
- Minor damage to kutcha roads.
- Damage to horticulture and standing crops in some areas due to inundation.
- Partial disruption of power and communication lines.
- Breaking of tree branches, uprooting of small trees including banana, papaya and drumstick.

**(viii) Action Suggested**

- Total suspension of fishing operations.
- Fishermen are advised not venture into southwest Bay of Bengal adjoining areas of westcentral Bay of Bengal, Gulf of Mannar and along & off Tamil Nadu-Puducherry, South Andhra Pradesh and East Sri Lanka coasts till 30<sup>th</sup> November.
- Fishermen out at sea are advised to return to coast.
- The ships plying over the area need to be regulated.
- People should stay in safe places during 30<sup>th</sup> morning to evening.
- Check for traffic congestion on your route before leaving for your destination.
- Follow any traffic advisories that are issued in this regard.
- Avoid going to areas that face the water logging problems often.
- Special care may be taken for fishing ponds and poultry over coastal areas.
- Avoid staying in vulnerable structure.

**(ix) Agromet advisories [over coastal districts of Tamil Nadu – Puducherry and adjoining south Andhra Pradesh]**

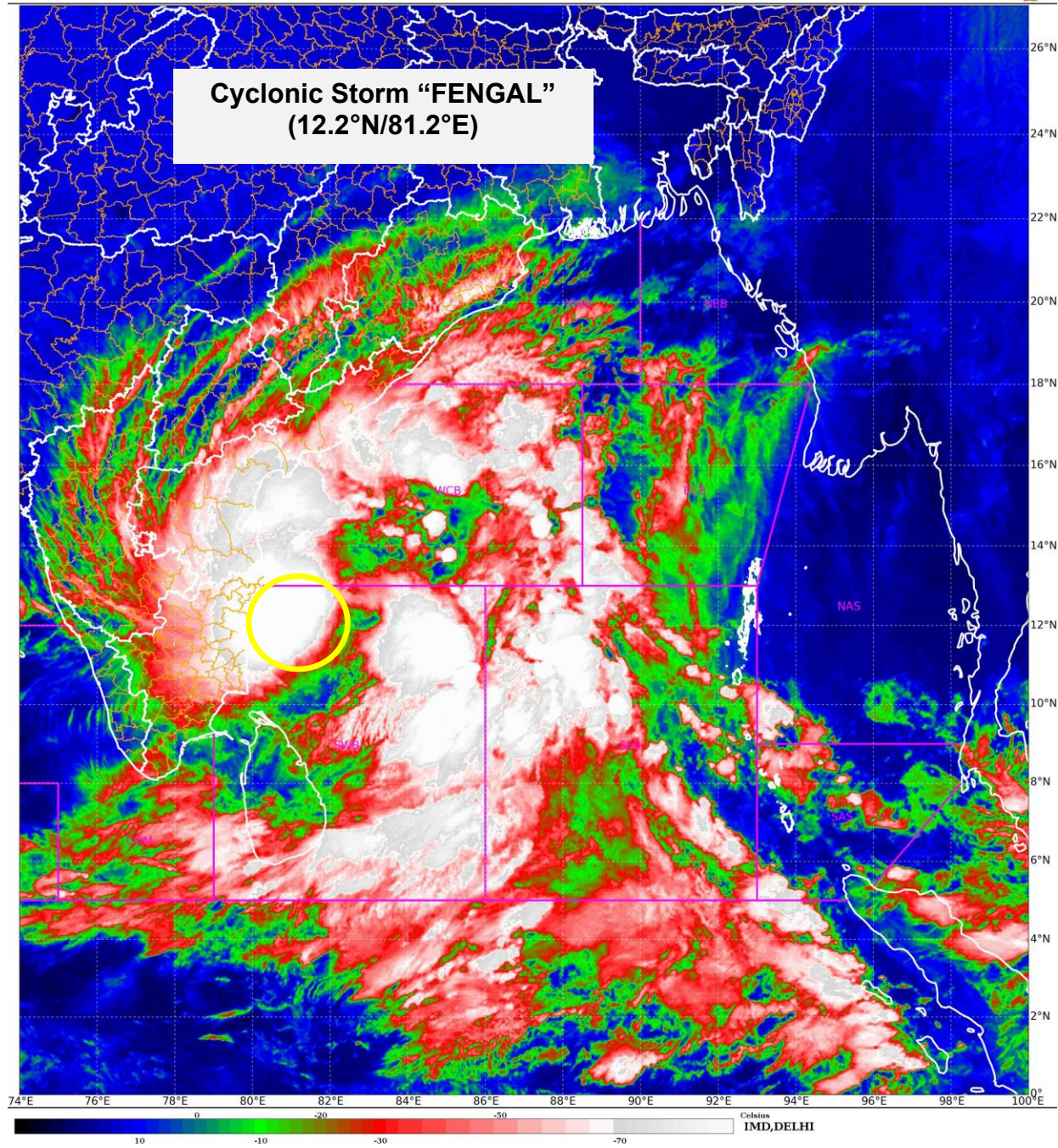
Provide adequate drainage facilities for the removal of excess water from rice, cotton, sugarcane, turmeric and vegetable fields, coconut and banana orchards. Provide mechanical support to banana plants to prevent lodging.

- Make arrangements to drain out excess water from the standing crop fields and fruit orchards in Kerala and Coastal Andhra Pradesh.
- Harvest the matured crops and keep it in safe place.
- Provide mechanical support to horticultural crops and staking to vegetables.

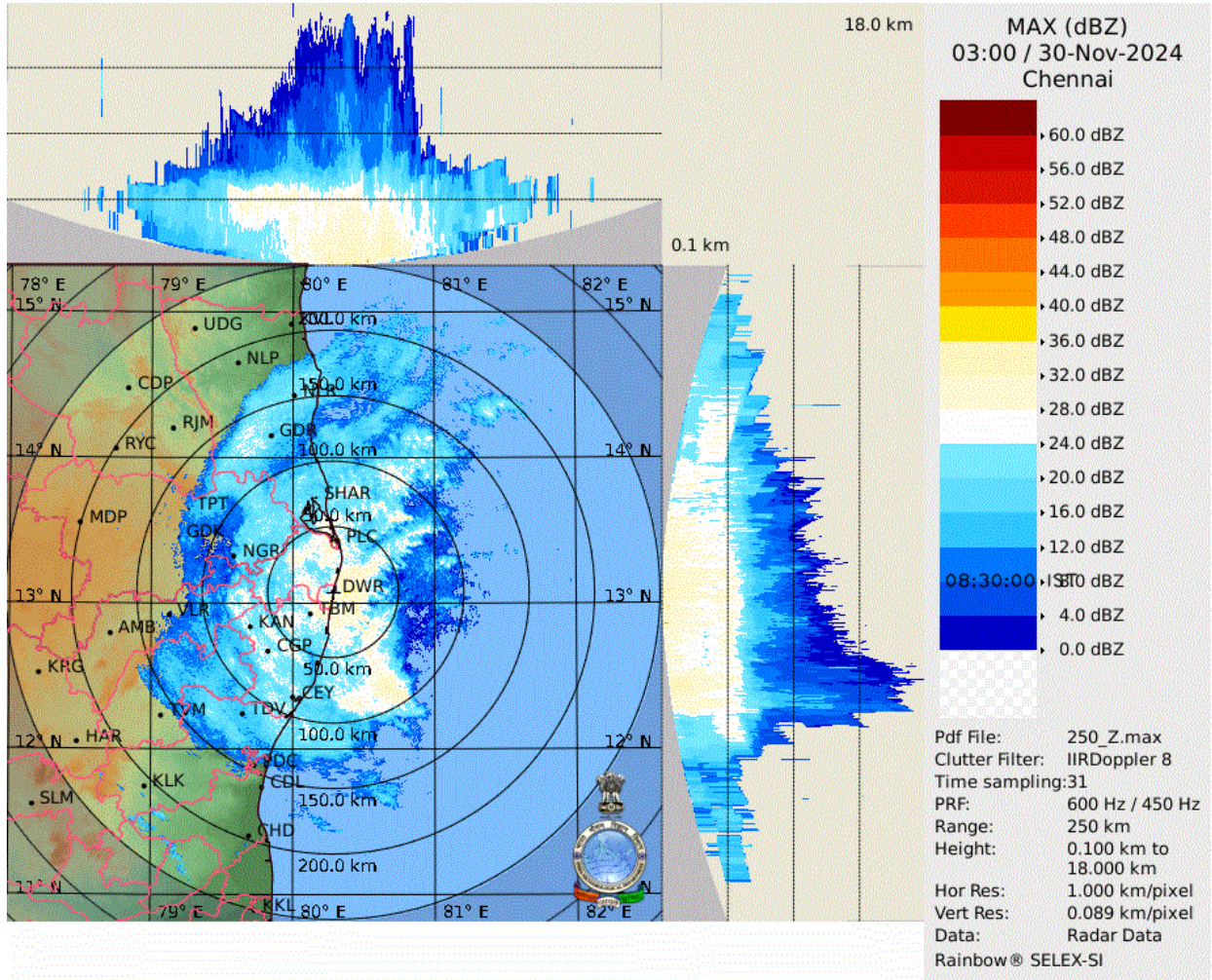
**Next bulletin will be issued at 1230 hours IST of today, the 30<sup>th</sup> November, 2024.**

**(Dr. Shashi Kant)  
Scientist D, RSMC, New Delhi**

*Copy to: ACWC Kolkata/ACWC Chennai/CWC Bhubaneswar/MC, Amaravati/MC,  
Thiruvananthapuram/CWC, Vishakhapatnam*

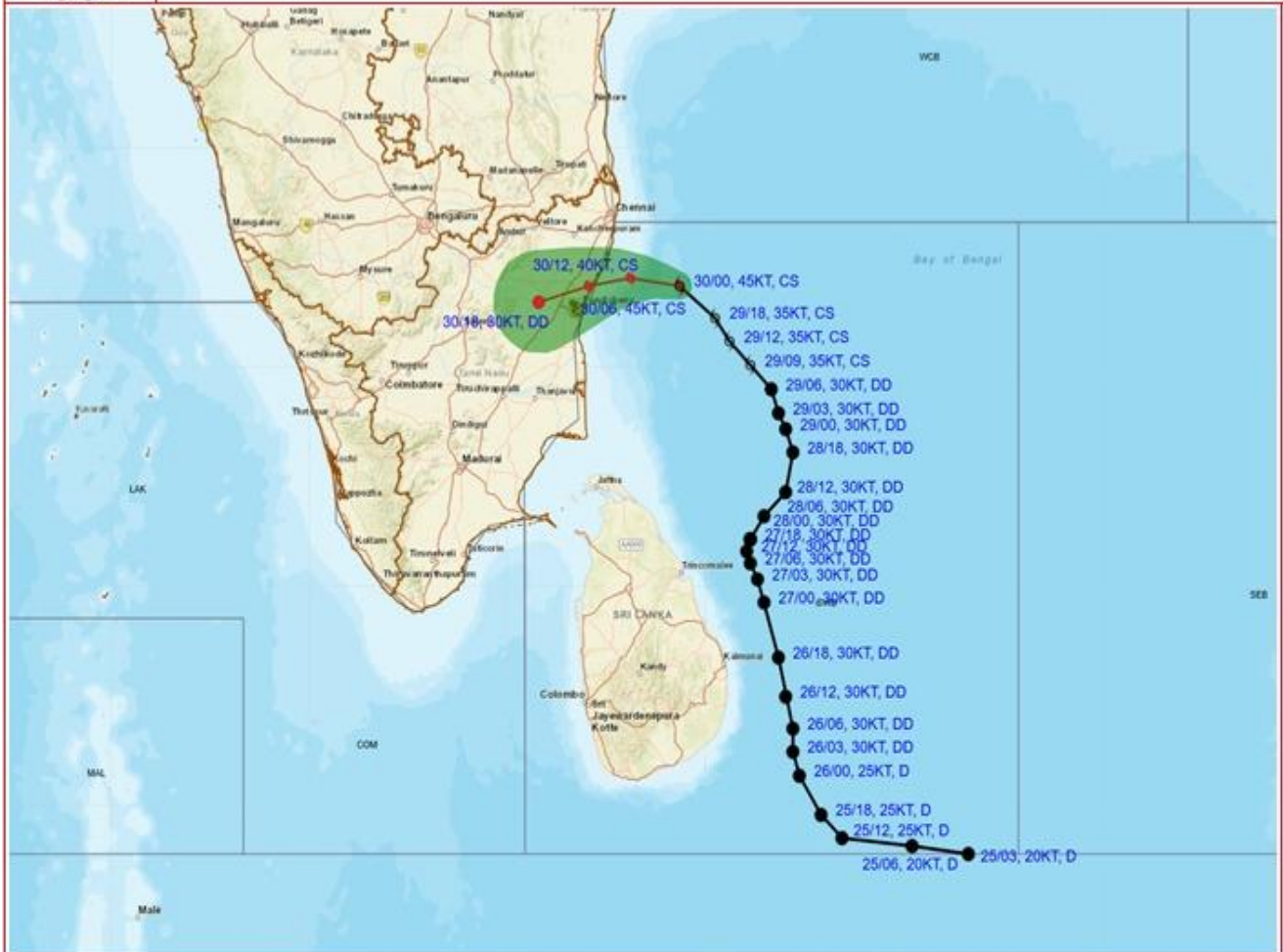


# Image of Chennai Radar





**OBSERVED AND FORECAST TRACK ALONG WITH CONE OF UNCERTAINTY OF CYCLONIC STORM "FENGAL" OVER SOUTHWEST BAY OF BENGAL BASED ON 0000 UTC (0530 HRS. IST) OF 30<sup>TH</sup> NOVEMBER, 2024.**



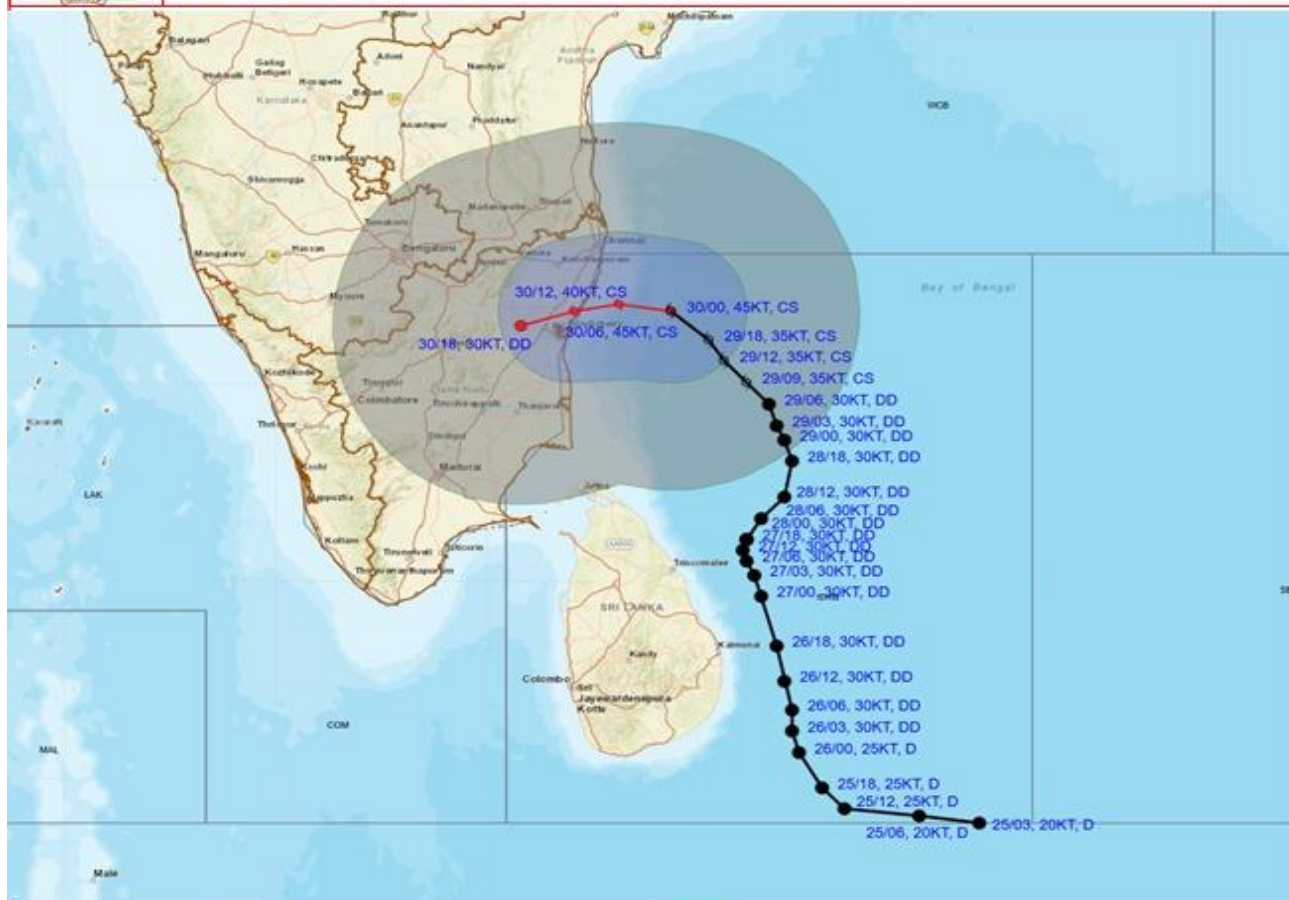
DATE/TIME : IN UTC  
 IST : UTC + 0530  
 KT : NAUTICAL MILE S/HOUR = 1.85 KM/HOUR  
 LPA : LOW PRESSURE AREA  
 WML : WELL MARKED LOW PRESSURE AREA  
 D : DEPRESSION (17-27 KT)  
 DD : DEEP DEPRESSION (28-33 KT)  
 CS : CYCLONIC STORM (34-47 KT)  
 SCS : SEVERE CYCLONIC STORM (48-63 KT)  
 VSCS : VERY SEVERE CYCLONIC STORM (64-89 KT)  
 ESCS : EXTREMELY SEVERE CYCLONIC STORM (90-119 KT)  
 SuCS : SUPER CYCLONIC STORM ( $\geq 120$  KT)

● LESS THAN 34 KT  
 ☁ 34-47 KT  
 ☁  $\geq 48$  KT  
 — OBSERVED TRACK  
 — FORECAST TRACK  
 ▲ CONE OF UNCERTAINTY

Forecast	DISTANCE (KM) AND DIRECTION FROM STATIONS				
Date and Time (UTC)	TRINCOMALEE	BATTICALOA	NAGAPPATTINAM	PUDUCHERRY	CHENNAI/MINAMBAKKAM
30.11.24/0000	400, N	500, N	220, NE	150, E	140, SE



**OBSERVED AND FORECAST TRACK ALONGWITH QUADRANT WIND DISTRIBUTION OF CYCLONIC STORM "FENGAL" OVER SOUTHWEST BAY OF BENGAL BASED ON 0000 UTC (0530 HRS. IST) OF 30<sup>TH</sup> NOVEMBER, 2024.**



DATE/TIME : IN UTC  
 IST : UTC + 0530  
 KT : NAUTICAL MILE S/HOUR = 1.85 KM/HOUR  
 LPA : LOW PRESSURE AREA  
 WML : WELL MARKED LOW PRESSURE AREA  
 D : DEPRESSION (17-27 KT)  
 DD : DEEP DEPRESSION (28-33 KT)  
 CS : CYCLONIC STORM (34-47 KT)  
 SCS : SEVERE CYCLONIC STORM (48-63 KT)  
 VSCS : VERY SEVERE CYCLONIC STORM (64-89 KT)  
 ESCS : EXTREMELY SEVERE CYCLONIC STORM (90-119 KT)  
 SuCS : SUPER CYCLONIC STORM (≥120 KT)

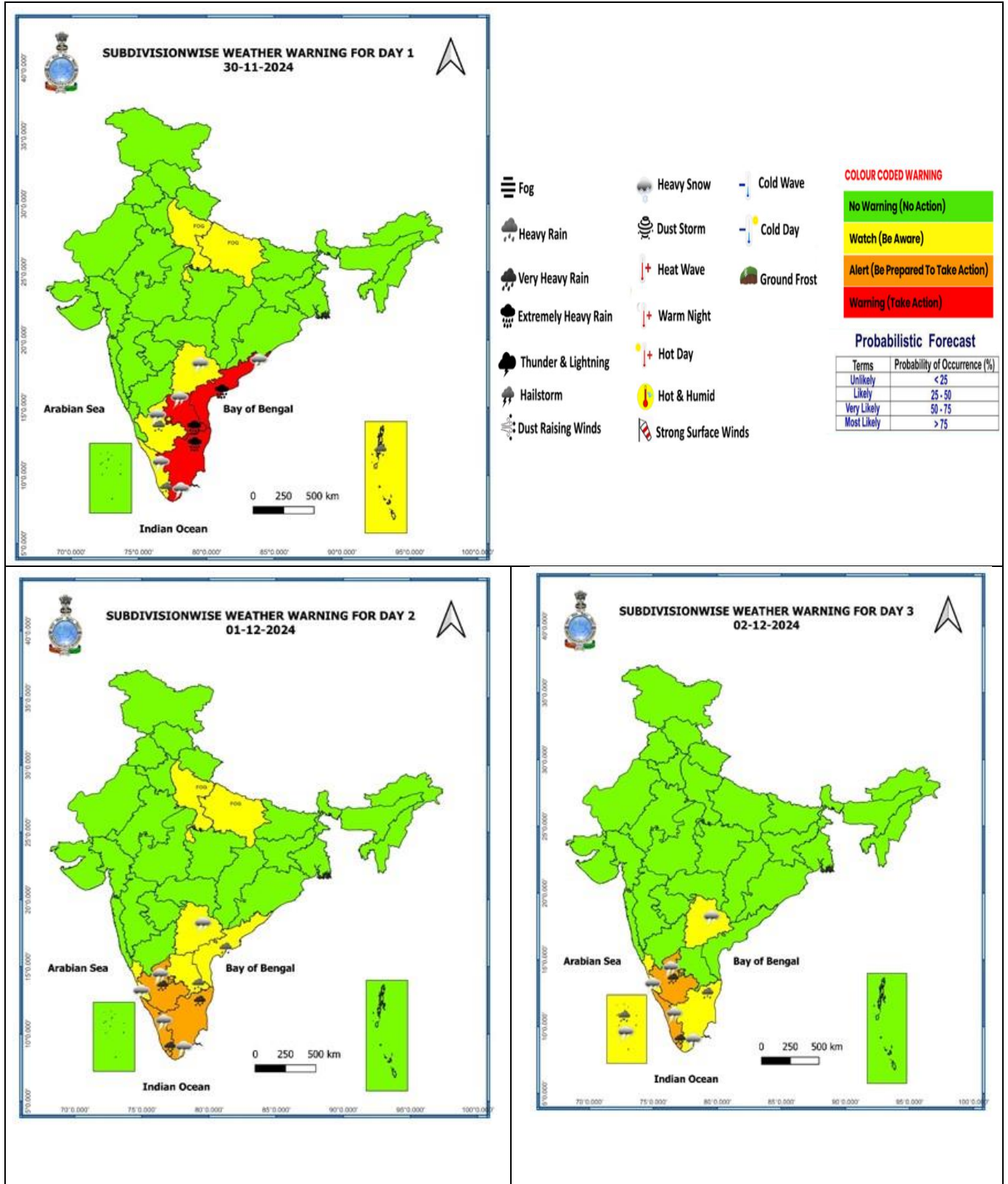
● LESS THAN 34 KT  
 ○ 34-47 KT  
 ● ≥ 48 KT  
 — OBSERVED TRACK  
 — FORECAST TRACK  
 — CONE OF UNCERTAINTY  
 AREA OF MAXIMUM SUSTAINED WIND SPEED:  
 ■ 28-33 KT (52-61 KMPH)  
 ■ 34-49 KT (62-91 KMPH)  
 ■ 50-63 KT (92-117 KMPH)  
 ■ ≥ 64 KT (≥118 KMPH)

**IMPACT OVER THE SEA**

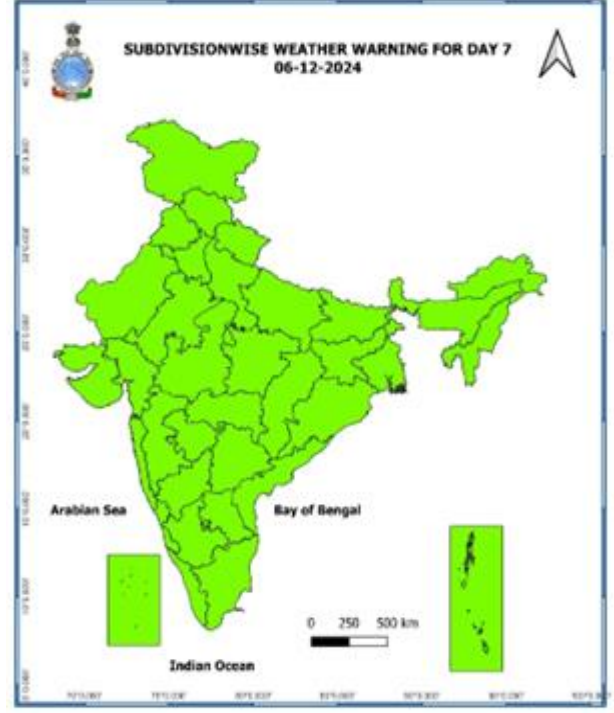
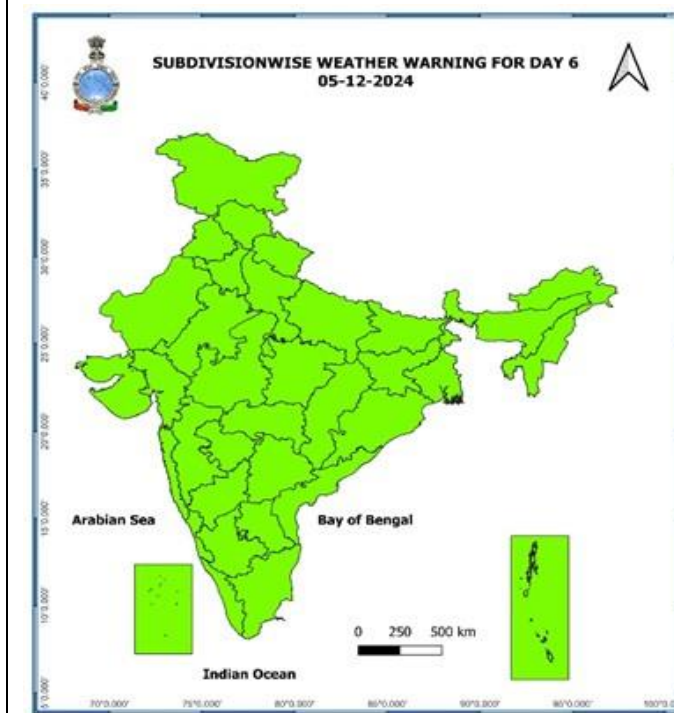
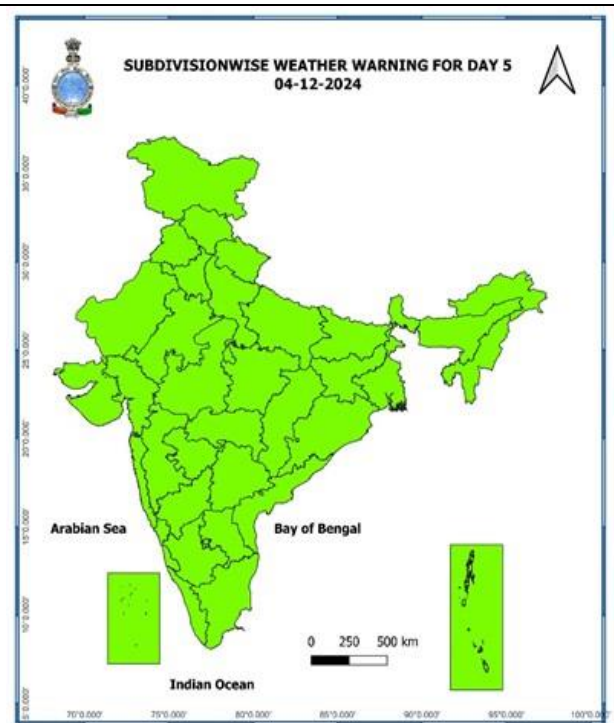
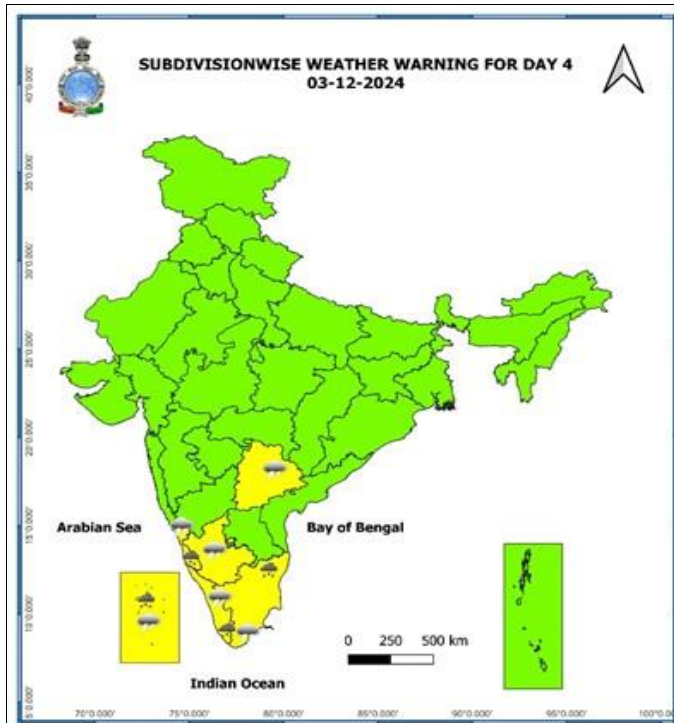
MSW (knot/kmph)	Impact	Action
28-33 (52-61)	Very rough seas	Total suspension of fishing operations
34-49 (62-91)	High to very high seas	Total suspension of fishing operations
50-63 (92-117)	Very high seas	Total suspension of fishing operations
≥ 64 (≥118)	Phenomenal	Total suspension of fishing operations



## Weather Warning Graphics

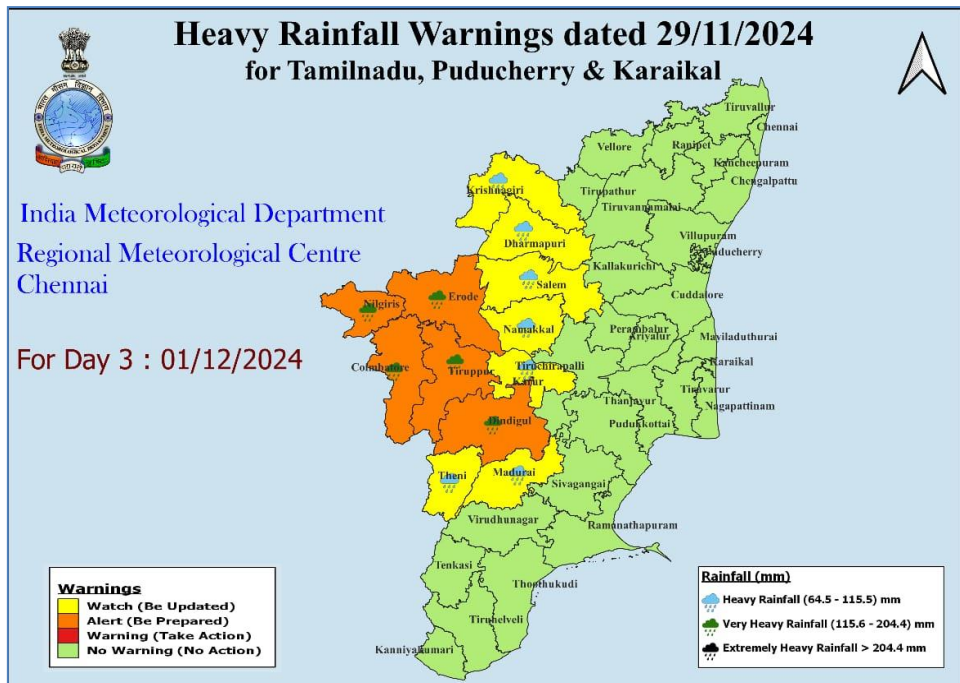
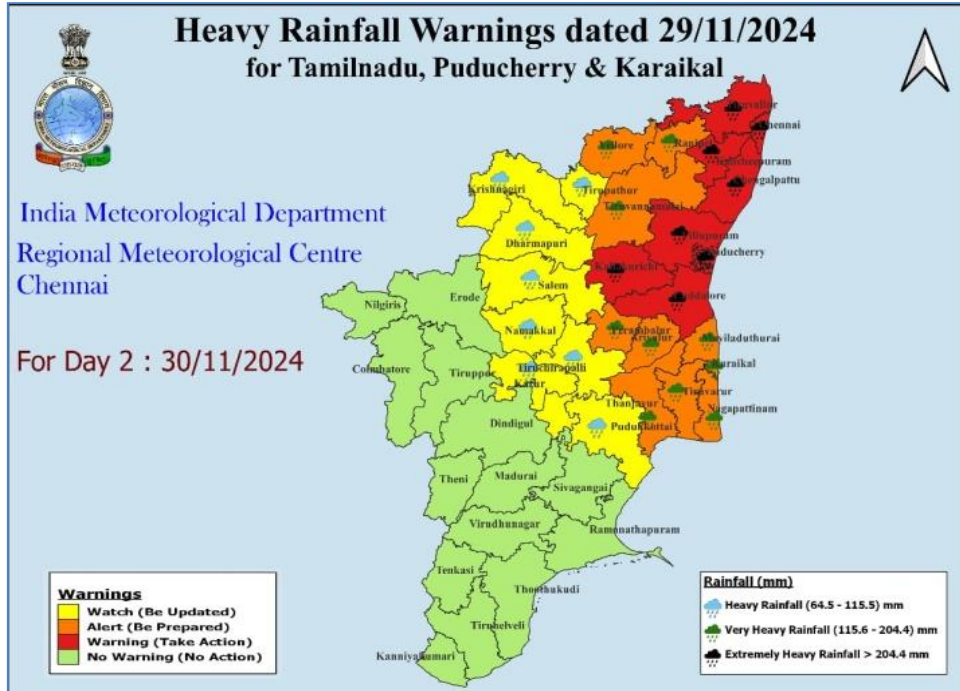


- Fog
- Heavy Rain
- Very Heavy Rain
- Extremely Heavy Rain
- Thunder & Lightning
- Hailstorm
- Dust Raising Winds
- Heavy Snow
- Dust Storm
- Heat Wave
- Warm Night
- Hot Day
- Hot & Humid
- Cold Wave
- Cold Day
- Ground Frost
- Strong Surface Winds



- Action may be taken based on **ORANGE AND RED** COLOUR warnings.
- Vulnerable regions likely urban and hilly areas action may be initiated for heavy rainfall warning.
- As the lead period increases forecast accuracy decreases.

## District-Wise Warning Graphics of Tamil Nadu & Puducherry



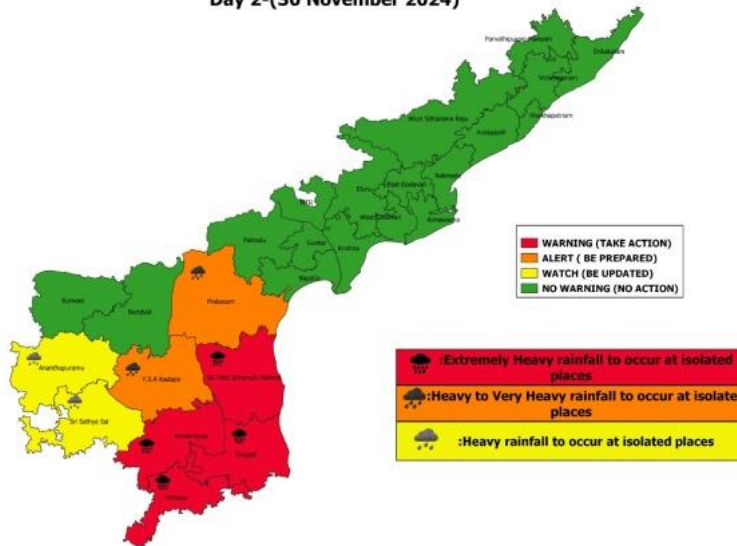
# District-Wise Warning Graphics of Andhra Pradesh



**Rainfall warnings for Andhra Pradesh and Yanam.**  
Valid from 0830 hrs IST of 30.11.2024 to 0830 hrs IST of 01.12.2024

Date of Issue:- 29 November 2024

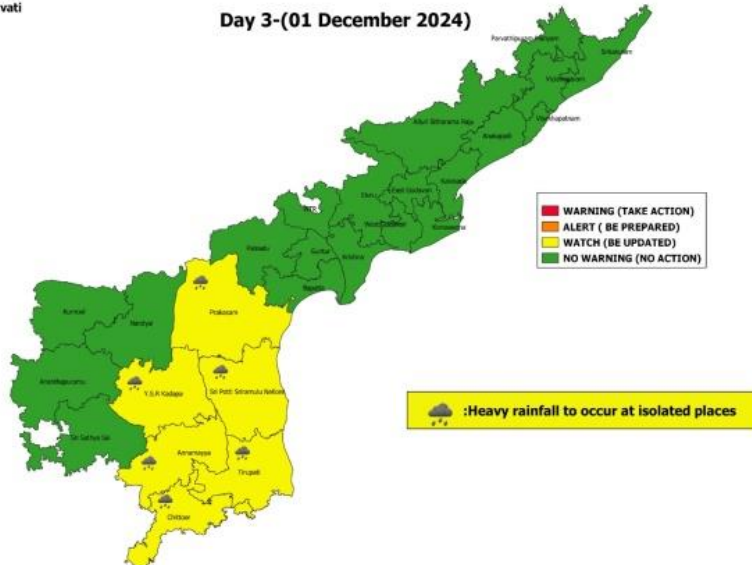
Day 2-(30 November 2024)



**Rainfall warnings for Andhra Pradesh and Yanam.**  
Valid from 0830 hrs IST of 01.12.2024 to 0830 hrs IST of 02.12.2024

Date of Issue:- 29 November 2024

Day 3-(01 December 2024)



## Flash Flood Guidance

### **24 hours Outlook for the Flash Flood Risk (FFR) till 0530 IST of 30-11-2024 :**

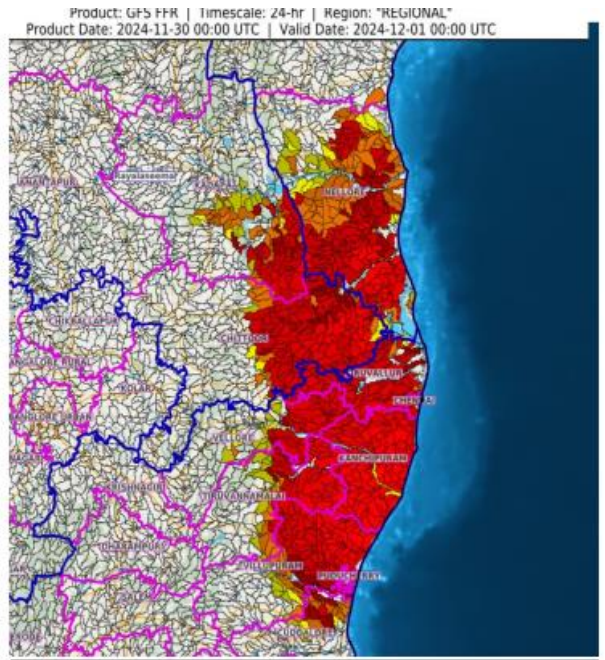
**Low to Moderate flash flood risk** likely over few watersheds & neighbourhoods of following Met Sub-divisions during next 24 hours.

**Coastal Andhra Pradesh & Yanam** - Nellore district.

**Royalaseema** - Chittoor and Kadapa districts.

**Tamil Nadu - Puducherry & Karaikal** - Puduchery, Chennai, Cuddalore, Kanchipuram, Tiruvallur, Tiruvannamalai, Vellore and Villupuram districts.

Surface runoff/ Inundation may occur at some fully saturated soils & low-lying areas over Area of Concern (AoC) as shown in map due to expected rainfall occurrence in next 24 hours.



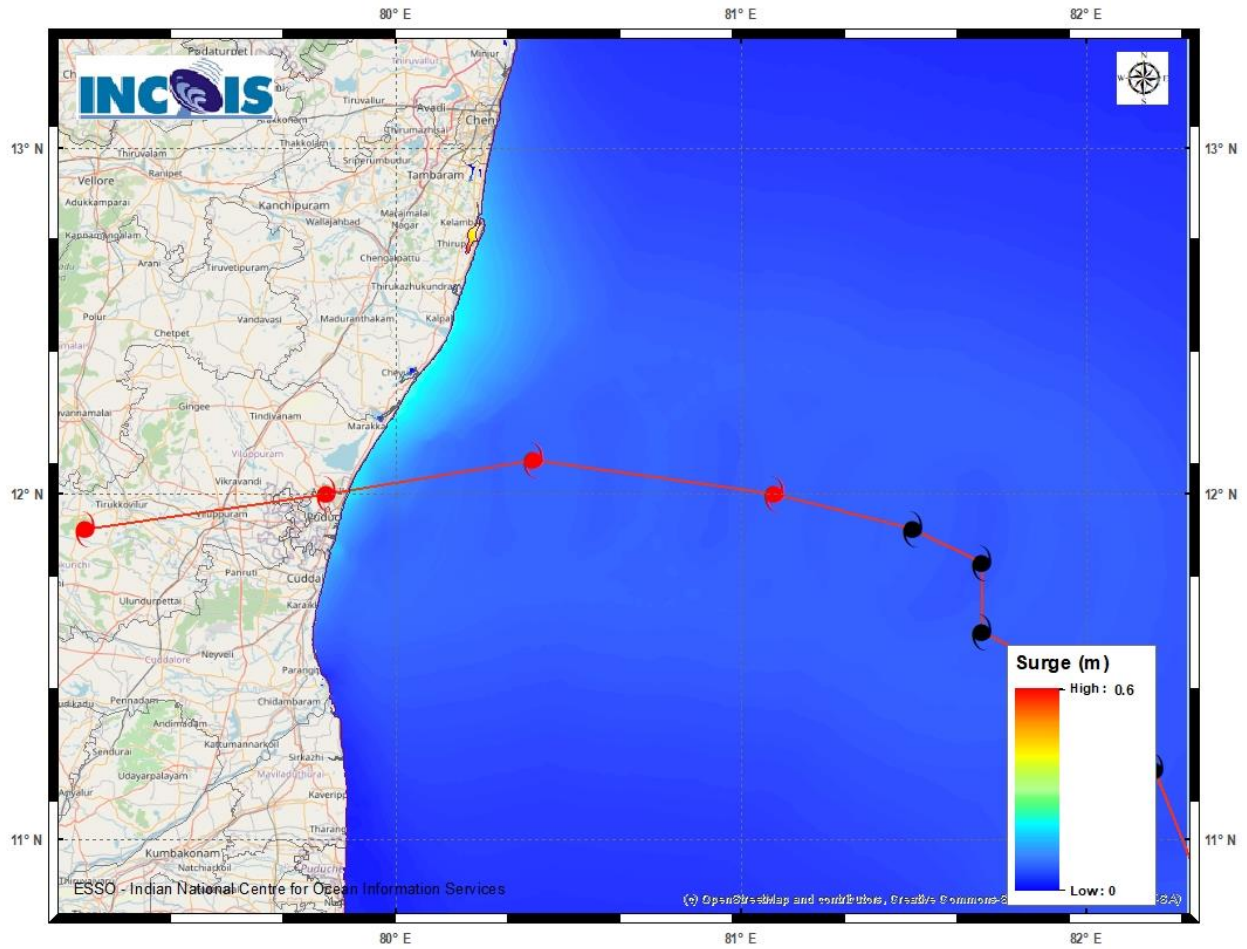
### **Flash Flood Risk**

**High Risk (Take Action)**

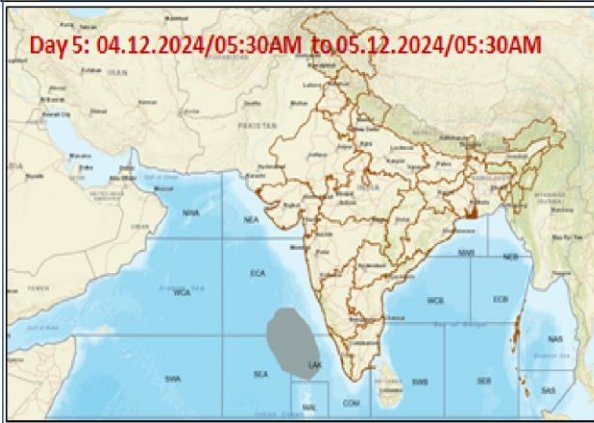
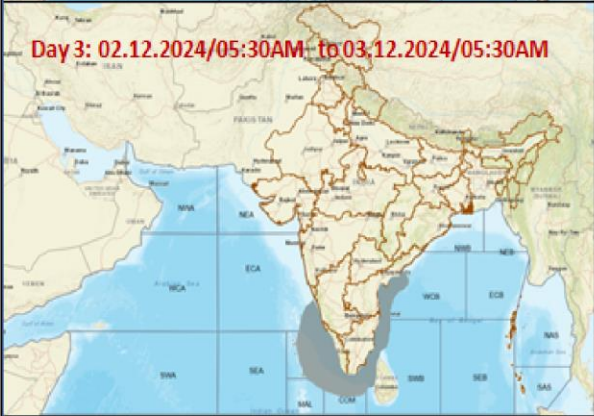
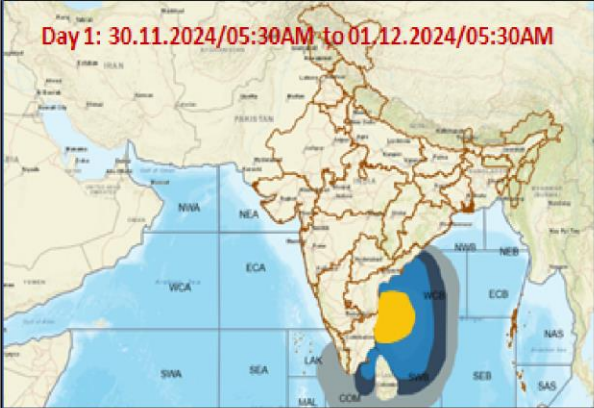
**Moderate Risk (Be Prepared)**

**Low Risk (Be Updated)**

# Storm Surge graphics



**Fishermen Warning Graphics**



	Squally Weather with wind speed 35-45 kmph gusting to 55 kmph
	Squally wind with speed 45-55 kmph gusting to 65 kmph
	Deep depression with wind speed 55-65 kmph gusting to 75 kmph
	CS with Gale winds with speed 60-80 kmph gusting to 90 kmph

**Fishermen are advised not to venture into the marked areas.**