

Tuesday, December 03, 2024
Time of Issue: 1945 hours IST
(NIGHT)

All India Impact Based Weather Warning Bulletin

Weather Warnings for next 7 days is given below:
(Graphics for warnings & rainfall distribution (Table 1) are given below the text:

03 December (Day 1):

- ❖ **Heavy to very heavy rainfall** at isolated places is very likely over north Kerala; **Heavy rainfall** at isolated places over Tamil Nadu, Puducherry & Karaikal, Lakshadweep, Coastal & South Interior Karnataka and Rayalaseema.
- ❖ **Thunderstorm accompanied with lightning** very likely at isolated places over Tamil Nadu, Puducherry & Karaikal, Kerala & Mahe, Lakshadweep, Coastal Andhra Pradesh & Yanam and Rayalaseema.
- ❖ **Squally weather with wind speed 35 kmph to 45 kmph gusting to 55 kmph** is likely to prevailing along and off Kerala, Karnataka, off goa coasts, over Lakshadweep area, adjoining southeast Arabian sea, southern parts of eastcentral Arabian sea. Fishermen are advised not to venture into these areas.

04 December (Day 2):

- ❖ **Thunderstorm accompanied with lightning** very likely at isolated places over Konkan & Goa, Madhya Maharashtra, Kerala & Mahe, Coastal Andhra Pradesh & Yanam and Rayalaseema.
- ❖ **Squally weather with wind speed 35 kmph to 45 kmph gusting to 55 kmph** is likely to prevailing over Lakshadweep area, adjoining southeast Arabian sea, southern parts of eastcentral Arabian sea. Fishermen are advised not to venture into these areas.

05 December (Day 3):

- ❖ **Thunderstorm accompanied with lightning** very likely at isolated places over Konkan & Goa, Madhya Maharashtra, Coastal Karnataka, Coastal Andhra Pradesh & Yanam and Rayalaseema.
- ❖ **Squally weather with wind speed 35 kmph to 45 kmph gusting to 55 kmph** is likely to prevailing over southern parts of eastcentral adjoining parts of southeast Arabian sea and off Lakshadweep area. Fishermen are advised not to venture into these areas.

06 December (Day 4):

- ❖ **Thunderstorm accompanied with lightning** likely at isolated places over Madhya Maharashtra and Coastal Karnataka.
- ❖ **Squally weather with wind speed 35 kmph to 45 kmph gusting to 55 kmph** is likely to prevailing over central parts of south Arabian sea, adjoining parts of central Arabian sea area. Fishermen are advised not to venture into these areas.

07 December (Day 5):

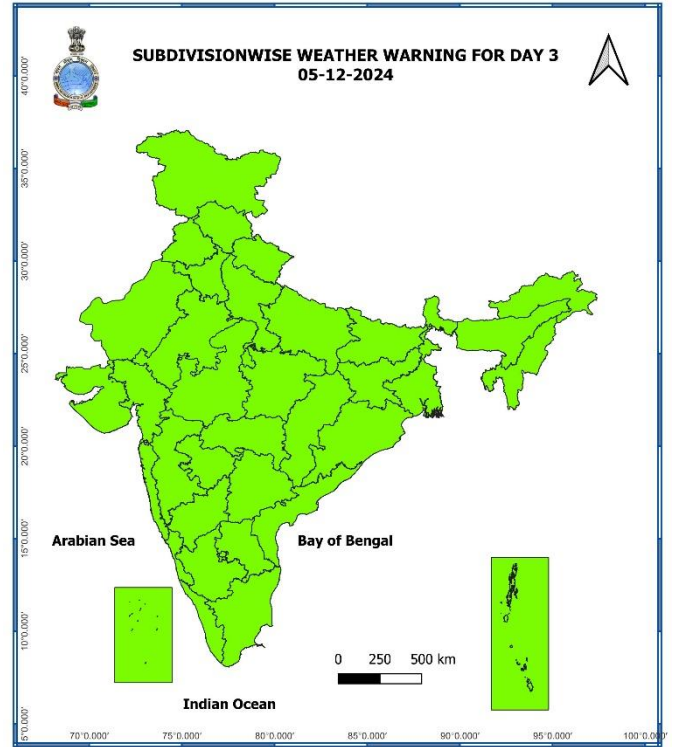
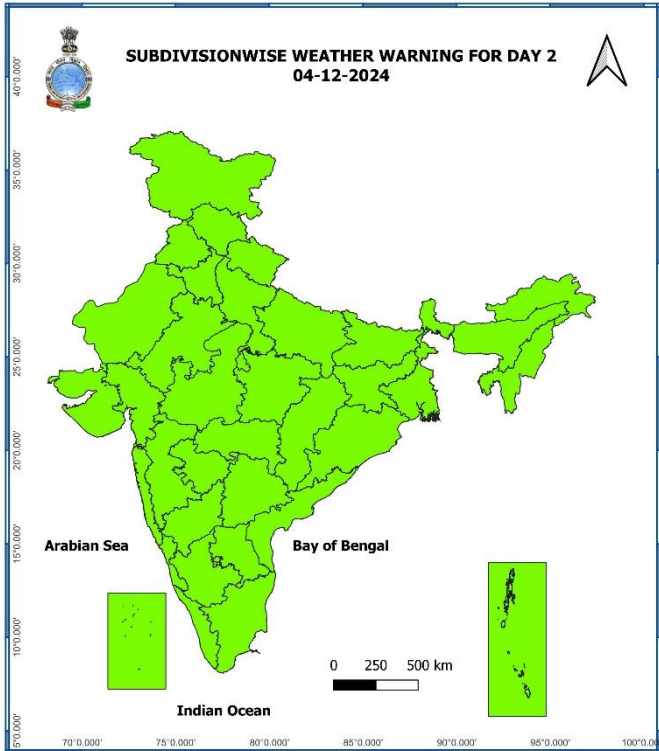
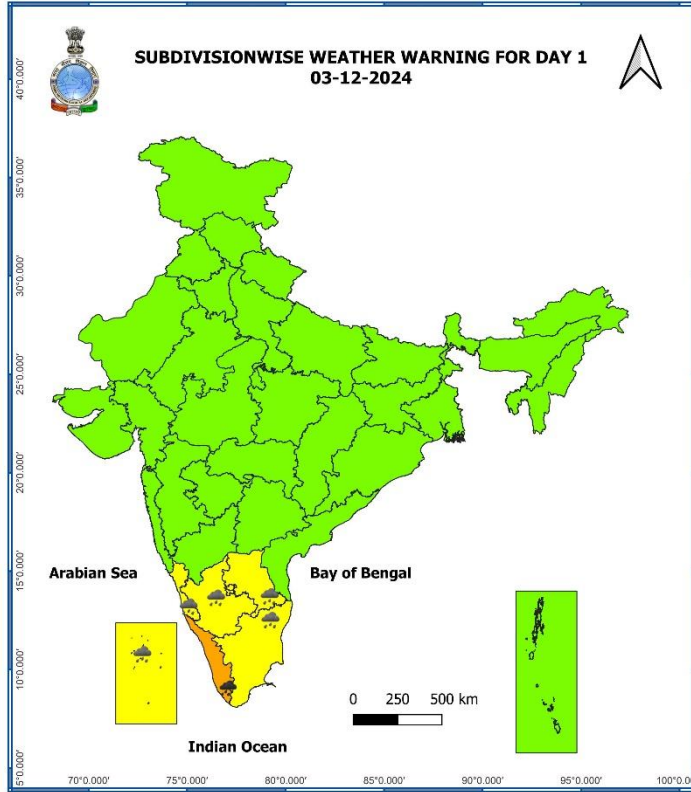
- ❖ **Thunderstorm accompanied with lightning** likely at isolated places over Coastal Karnataka.
- ❖ **Squally weather with wind speed 35 kmph to 45 kmph gusting to 55 kmph** is likely to prevailing over southwest Arabian sea and adjoining areas. Fishermen are advised not to venture into these areas.

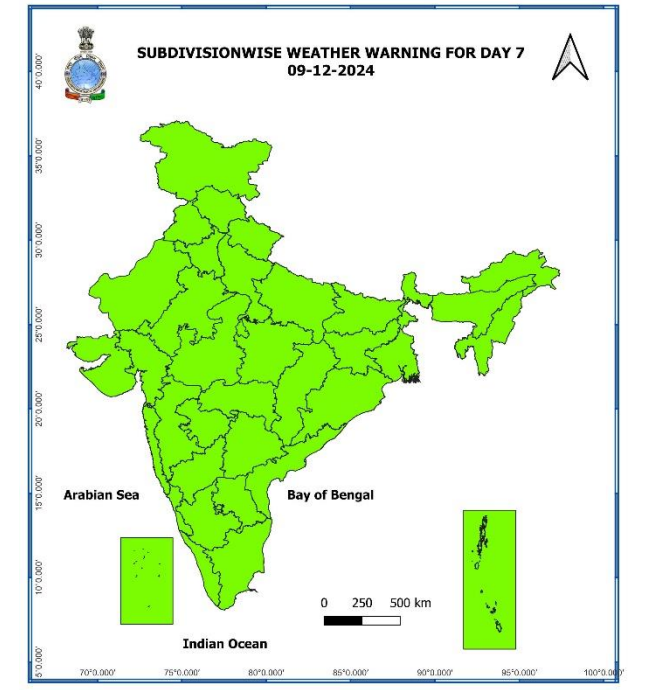
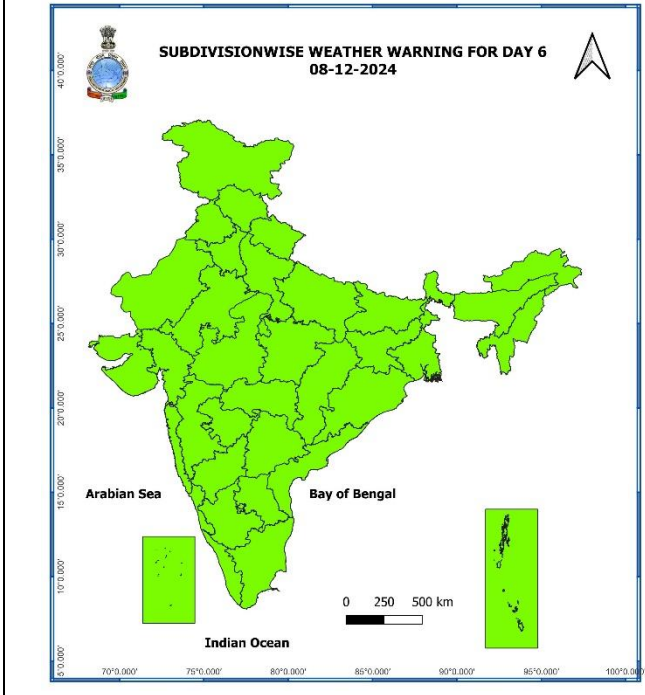
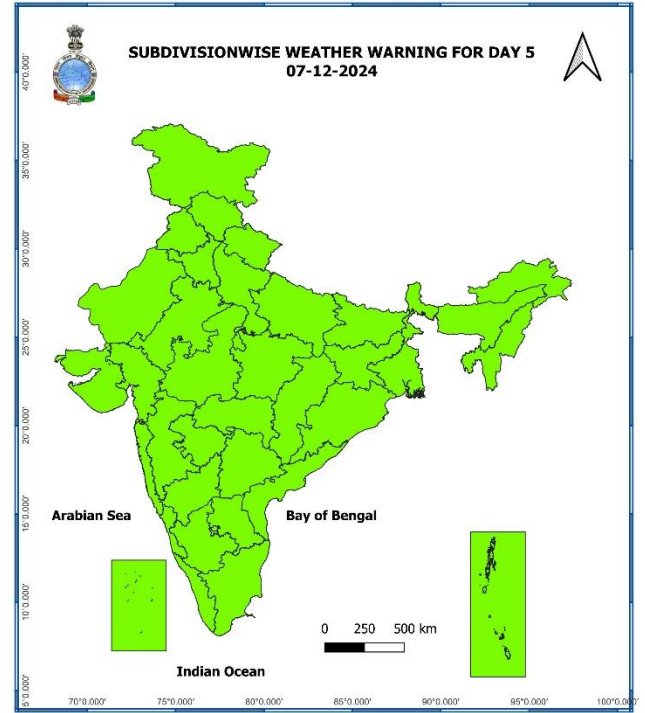
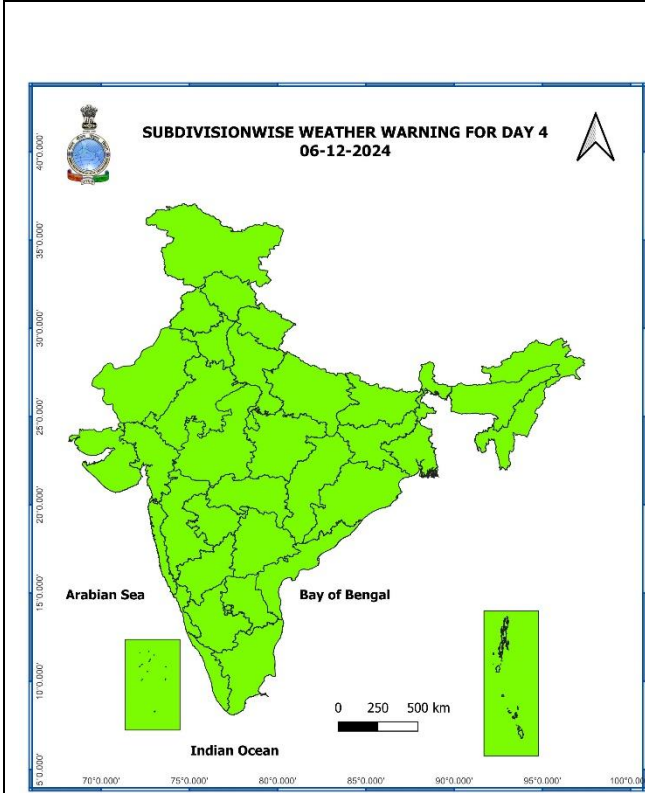
08 December (Day 6):

- ❖ **No Warning.**

09 December (Day 7):

- ❖ **No Warning.**





- Action may be taken based on **ORANGE AND RED** COLOUR warnings.
- Vulnerable regions likely urban and hilly areas action may be initiated for heavy rainfall warning.
- As the lead period increases forecast accuracy decreases.

Table-1

7 Days Rainfall Forecast								
S. No.	Subdivision	03-Dec	04-Dec	05-Dec	06-Dec	07-Dec	08-Dec	09-Dec
		Day 1	Day 2	Day 3	Day 4	Day 5	Day 6	Day 7
1	ANDAMAN & NICOBAR ISLANDS	ISOL	ISOL	SCT	FWS	FWS	FWS	FWS
2	ARUNACHAL PRADESH	DRY	DRY	DRY	DRY	DRY	ISOL	ISOL
3	ASSAM & MEGHALAYA	DRY	DRY	DRY	DRY	DRY	DRY	DRY
4	NAGALAND, MANIPUR, MIZORAM & TRIPURA	DRY	DRY	DRY	DRY	DRY	DRY	DRY
5	SUB-HIMALAYAN WEST BENGAL & SIKKIM	DRY	DRY	DRY	ISOL	ISOL	ISOL	ISOL
6	GANGETIC WEST BENGAL	DRY	DRY	DRY	DRY	DRY	DRY	DRY
7	ODISHA	ISOL	ISOL	ISOL	ISOL	DRY	DRY	DRY
8	JHARKHAND	DRY	DRY	DRY	DRY	DRY	DRY	DRY
9	BIHAR	DRY	DRY	DRY	DRY	DRY	DRY	DRY
10	EAST UTTAR PRADESH	DRY	DRY	DRY	DRY	DRY	DRY	DRY
11	WEST UTTAR PRADESH	DRY	DRY	DRY	DRY	DRY	DRY	DRY
12	UTTARAKHAND	DRY	DRY	DRY	DRY	DRY	ISOL	DRY
13	HARYANA CHANDIGARH & DELHI	DRY	DRY	DRY	DRY	DRY	ISOL	DRY
14	PUNJAB	DRY	DRY	DRY	DRY	DRY	ISOL	DRY
15	HIMACHAL PRADESH	ISOL	DRY	DRY	DRY	ISOL	ISOL	ISOL
16	JAMMU & KASHMIR AND LADAKH	DRY	DRY	DRY	DRY	ISOL	ISOL	DRY
17	WEST RAJASTHAN	DRY	DRY	DRY	DRY	DRY	DRY	DRY
18	EAST RAJASTHAN	DRY	DRY	DRY	DRY	DRY	DRY	DRY
19	WEST MADHYA PRADESH	ISOL	ISOL	DRY	DRY	DRY	DRY	DRY
20	EAST MADHYA PRADESH	ISOL	ISOL	DRY	DRY	DRY	DRY	DRY
21	GUJARAT REGION	DRY	DRY	DRY	DRY	DRY	DRY	DRY
22	SAURASHTRA & KUTCH	DRY	DRY	DRY	DRY	DRY	DRY	DRY
23	KONKAN & GOA	ISOL	ISOL	ISOL	ISOL	DRY	DRY	DRY
24	MADHYA MAHARASHTRA	ISOL	ISOL	ISOL	ISOL	ISOL	DRY	DRY
25	MARATHAWADA	ISOL	ISOL	ISOL	ISOL	ISOL	DRY	DRY
26	VIDARBHA	DRY	DRY	ISOL	ISOL	ISOL	DRY	DRY
27	CHHATTISGARH	ISOL	ISOL	ISOL	ISOL	ISOL	ISOL	ISOL
28	COASTAL ANDHRA PRADESH & YANAM	FWS	FWS	SCT	SCT	SCT	ISOL	ISOL
29	TELANGANA	SCT	SCT	SCT	SCT	ISOL	ISOL	ISOL
30	RAYALASEEMA	FWS	FWS	SCT	SCT	SCT	ISOL	ISOL
31	TAMILNADU PUDUCHERRY & KARAIKAL	SCT	SCT	ISOL	ISOL	ISOL	ISOL	ISOL
32	COASTAL KARNATAKA	WS	FWS	SCT	SCT	FWS	SCT	DRY
33	NORTH INTERIOR KARNATAKA	FWS	ISOL	SCT	SCT	SCT	ISOL	DRY
34	SOUTH INTERIOR KARNATAKA	FWS	ISOL	SCT	SCT	SCT	ISOL	DRY
35	KERALA & MAHE	FWS	SCT	SCT	SCT	SCT	SCT	SCT
36	LAKSHADWEEP	FWS	SCT	SCT	SCT	SCT	SCT	SCT

• As the lead period increases forecast accuracy decreases.

Impact expected due to Heavy Rainfall

- ✓ Isolated heavy to very heavy rainfall over Kerala & Mahe on 03rd December.

A. Impact Expected

- ❖ Localized Flooding of roads, water logging in low lying areas and closure of underpasses mainly in urban areas of the above region.
- ❖ Occasional reduction in visibility due to heavy rainfall.
- ❖ Disruption of traffic in major cities due to water logging in roads leading to increased travel time.
- ❖ Minor damage to kutcha roads.
- ❖ Possibilities of damage to vulnerable structure.
- ❖ Localized Landslides/Mudslides
- ❖ Damage to horticulture and standing crops in some areas due to inundation.
- ❖ It may lead to riverine flooding in some river catchments (for riverine flooding please visit Web page of CWC).

B. Action Suggested

- ❖ Check for traffic congestion on your route before leaving for your destination.
- ❖ Follow any traffic advisories that are issued in this regard.
- ❖ Avoid going to areas that face the water logging problems often.
- ❖ Avoid staying in vulnerable structure.

Agromet advisories for Heavy Rainfall likely over Tamil Nadu, Kerala, Coastal & South Interior Karnataka:

- Drain out excess water from rice, sugarcane, cotton, turmeric, vegetables, and other standing crop fields, as well as coconut and banana orchards in **Tamil Nadu**; from rice, coffee, banana, coconut, areca nut, ginger, pepper, cardamom and other standing crops in **Kerala**; from cotton, rice, maize, groundnut, finger millet, pigeon pea, areca nut, fruits and vegetables in **South Interior Karnataka** and from areca nut, cashew, coconut, banana, jasmine, black pepper, other standing crops and fruit orchards in **Coastal Karnataka**.
- Keep the harvested produce in safer places or cover the produce with tarpaulin sheets in the fields.
- Provide mechanical support to horticultural crops and staking to vegetables.

Livestock and Fishery

- Keep the animals inside the shed during heavy rainfall and provide balanced feed.
- Store the feed and fodder at safer place to avoid spoilage from rainfall.
- Hang gunny bags all around poultry sheds.
- Check and disinfect poultry houses to prevent disease outbreaks due to dampness.
- Check the huts and other weaker structures before relocation of the animals.
- Remove excess water from fish ponds to avoid losses of fish (if feasible).
- Check and repair dykes around the ponds to avoid entry of runoff water from the catchment areas.

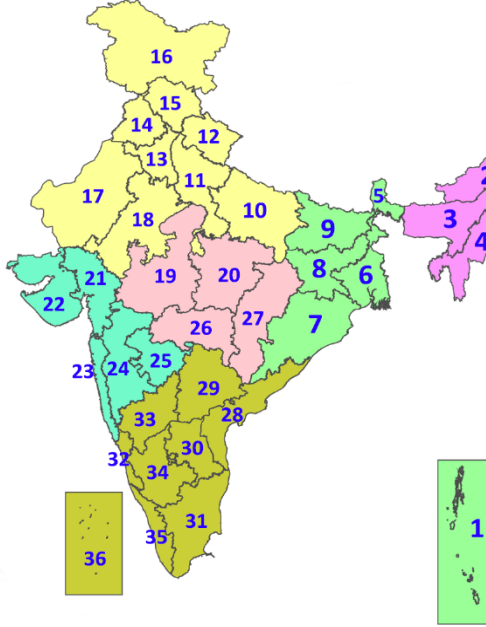
Legends & abbreviations:

- ❖ **Heavy Rain:**64.5-115.5mm; **Very Heavy Rain:**115.6-204.4mm; **Extremely Heavy Rain:** >204.4mm.
- ❖ **Obsy.:** Observatory; **AWS:** Automatic Weather Station; **ARG:** Automatic Rain Gauge; **dist.:** District; **NH:** National Highway; **KVK:** Krishi Vigyan Kendra; **DVC:** Damodar Valley Corporation; **PTO:** Part Time Office, **Aero:** Aerodrome, **IAF:** Indian Air Force.

- ❖ **Region wise classification of meteorological Sub-Divisions:**
 - ✓ **Northwest India:** Western Himalayan Region (Jammu-Kashmir-Ladakh-Gilgit-Baltistan-Muzaffarabad, Himachal Pradesh and Uttarakhand); Punjab, Haryana-Chandigarh-Delhi; West Uttar Pradesh, East Uttar Pradesh, West Rajasthan and East Rajasthan.
 - ✓ **Central India:** West Madhya Pradesh, East Madhya Pradesh, Vidarbha and Chhattisgarh.
 - ✓ **East India:** Bihar, Jharkhand, Sub-Himalayan West Bengal & Sikkim; Gangetic West Bengal, Odisha and Andaman & Nicobar Islands.
 - ✓ **Northeast India:** Arunachal Pradesh, Assam & Meghalaya and Nagaland, Manipur, Mizoram & Tripura.
 - ✓ **West India:** Gujarat Region, Saurashtra & Kutch, Konkan & Goa, Madhya Maharashtra and Marathawada.
 - ✓ **South India:** Coastal Andhra Pradesh & Yanam, Telangana, Rayalaseema, Coastal Karnataka, North Interior Karnataka, South Interior Karnataka, Kerala & Mahe, Tamil Nadu, Puducherry & Karaikal and Lakshadweep.

LEGENDS

1. अंडमान और निकोबार द्वीपसमूह
2. अरुणाचल प्रदेश
3. असम और मेघालय
4. नागालैंड, मणिपुर, मिजोरम और त्रिपुरा
5. उप-हिमालयी पश्चिम बंगाल और सिक्किम
6. गंगीय पश्चिम बंगाल
7. ओडिशा
8. झारखंड
9. बिहार
10. पूर्वी उत्तर प्रदेश
11. पश्चिम उत्तर प्रदेश
12. उत्तराखंड
13. हरियाणा, चंडीगढ़ और दिल्ली
14. पंजाब
15. हिमाचल प्रदेश
16. जम्मू और कश्मीर और लद्दाख
17. पश्चिम राजस्थान
18. पूर्वी राजस्थान
19. पश्चिम मध्य प्रदेश
20. पूर्वी मध्य प्रदेश
21. गुजरात
22. सौराष्ट्र
23. कोंकण और गोवा
24. मध्य महाराष्ट्र
25. मराठवाड़ा
26. विदर्भ
27. छत्तीसगढ़
28. तटीय आंध्र प्रदेश और यनम
29. तेलंगाना
30. रायलसीमा
31. तमिलनाडु, पुडुचेरी और कराईकल
32. तटीय कर्नाटक
33. आंतरिक उत्तरी कर्नाटक
34. आंतरिक दक्षिणी कर्नाटक
35. केरल और माहे
36. लक्षद्वीप



1. Andaman & Nicobar Islands
2. Arunachal Pradesh
3. Assam & Meghalaya
4. Nagaland, Manipur, Mizoram & Tripura
5. Sub-Himalayan West Bengal & Sikkim
6. Gangetic West Bengal
7. Odisha
8. Jharkhand
9. Bihar
10. East Uttar Pradesh
11. West Uttar Pradesh
12. Uttarakhand
13. Haryana, Chandigarh & Delhi
14. Punjab
15. Himachal Pradesh
16. Jammu & Kashmir and Ladakh
17. West Rajasthan
18. East Rajasthan
19. West Madhya Pradesh
20. East Madhya Pradesh
21. Gujarat
22. Saurashtra
23. Konkan & Goa
24. Madhya Maharashtra
25. Marathwada
26. Vidarbha
27. Chhattisgarh
28. Coastal Andhra Pradesh & Yanam
29. Telangana
30. Rayalaseema
31. Tamilnadu, Puducherry & Karaikal
32. Coastal Karnataka
33. North Interior Karnataka
34. South Interior Karnataka
35. Kerala & Mahe
36. Lakshadweep

SPATIAL DISTRIBUTION (% of Stations reporting)

% Stations	Category	% Stations	Category
76-100	Widespread (WS/Most Places)	26-50	Scattered (SCT/A Few Places)
51-75	Fairly Widespread (FWS/Many Places)	1-25	Isolated (ISOL)

- | | | |
|----------------------|----------------------|--------------|
| Fog | Heavy Snow | Cold Wave |
| Heavy Rain | Dust Storm | Cold Day |
| Very Heavy Rain | Heat Wave | Ground Frost |
| Extremely Heavy Rain | Warm Night | |
| Thunder & Lightning | Hot Day | |
| Hailstorm | Hot & Humid | |
| Dust Raising Winds | Strong Surface Winds | |

COLOUR CODED WARNING

No Warning (No Action)
Watch (Be Aware)
Alert (Be Prepared To Take Action)
Warning (Take Action)

Probabilistic Forecast

Terms	Probability of Occurrence (%)
Unlikely	< 25
Likely	25 - 50
Very Likely	50 - 75
Most Likely	> 75

* Red colour warning does not mean "Red Alert", Red colour warning means "Take Action".
Forecast and Warning for any day is valid from 0830 hours IST of day till 0830 hours IST of next day.
For more details, kindly visit <https://mausam.imd.gov.in> or contact: 011-2434-4599
(Service to the Nation since 1875)

DEFINITION/CRITERIA

Rain/ Snow *	Heavy: 64.5 to 115.5 mm/cm *
	Very Heavy: 115.6 to 204.4 mm/cm*
	Extremely Heavy: > 204.4 mm/cm *

Heat Wave	When maximum temperature of a station reaches $\geq 40^\circ\text{C}$ for plains and $\geq 30^\circ\text{C}$ for hilly regions
	(a) Based on Departure from normal
	Heat Wave: Maximum Temperature Departure from normal 4.5°C to 6.4°C .
	Severe Heat Wave: Maximum Temperature Departure from normal $\geq 6.5^\circ\text{C}$
	(b). Based on Actual maximum temperature
	Heat Wave: When actual maximum temperature $\geq 45^\circ\text{C}$.
Severe Heat Wave: When actual maximum temperature $\geq 47^\circ\text{C}$	
(c). Criteria for heat wave for coastal stations	
When maximum temperature departure is $>4.5^\circ\text{C}$ from normal. Heat Wave may be described provided maximum temperature $\geq 37^\circ\text{C}$	

Warm Night	When maximum temperature remains 40°C
	Warm Night: When minimum temperature departure 4.5°C to 6.4°C .
	Severe Warm Night: When minimum temperature departure $>6.4^\circ\text{C}$.

Cold Wave	When minimum temperature of a station $\leq 10^\circ\text{C}$ for plains and $\leq 0^\circ\text{C}$ for hilly regions.
	(a). Based on departure
	Cold Wave: Minimum Temperature Departure from normal -4.5°C to -6.4°C .
	Severe Cold Wave: Minimum Temperature Departure from normal $\leq -6.5^\circ\text{C}$
	(b) Based on actual Minimum Temperature (for Plains only)
	Cold Wave : When Minimum Temperature is $\leq 4.0^\circ\text{C}$
Severe Cold Wave: When Minimum Temperature is $\leq 2.0^\circ\text{C}$	
(c) For Coastal Stations	
When Minimum Temperature departure is $\leq -4.5^\circ\text{C}$ & actual Minimum Temperature is $\leq 15^\circ\text{C}$	

Cold Day	When minimum temperature of a station $\leq 10^\circ\text{C}$ for plains and $\leq 0^\circ\text{C}$ for hilly regions
	Based on departure
	Cold Day: Maximum Temperature Departure from normal -4.5°C to -6.4°C .
Severe Cold Day: Maximum Temperature Departure from normal $\leq -6.5^\circ\text{C}$	

Fog	Phenomenon of small droplets suspended in air and the horizontal visibility $< 1\text{km}$
	Moderate Fog: When the visibility between 500-200 metres
	Dense Fog: when the visibility between 50- 200 metres
	Very Dense Fog: when the visibility < 50 metres

Thunderstorm Sudden electrical discharges manifested by a flash of light (Lightning) and a sharp rumbling sound (thunder)

Dust/Sand Storm An ensemble of particles of dust or sand energetically lifted to great heights by a strong and turbulent wind.

Frost	Ice deposits on ground
	Air temperature $\leq 4^\circ\text{C}$ (over Plains)

Squall	A strong wind that rises suddenly, lasts for atleast 1 minute.
	Moderate: Wind speed 52-61 kmph
	Severe: Wind speed 62-87 kmph
	Very Severe: Wind speed >87 kmph

Sea State	Effect of various waves in the sea over specific area
	Rough to very rough: Wind speed 41-62 kmph (22-33 knots) & Wave height 2.5-6 metre
	High to very high: Wind speed 63-117 kmph (34-63 knots) & Wave height 6-14 metre
	Phenomenal: Wind speed >117 kmph (>63 knots) & Wave height >14 metre

Cyclone	Cyclonic Storm: Wind speed 62-87 kmph (34-47 knots)
	Severe Cyclonic Storm: Wind speed 88-117 kmph (48-63 knots)
	Very Severe Cyclonic Storm: Wind speed 118-165 kmph (64 - 89 knots)
	Extremely Severe Cyclonic Storm: Wind speed 166-220 kmph (90 -119 knots)
	Super Cyclone Strom: Wind speed >220 kmph (>119 knots)